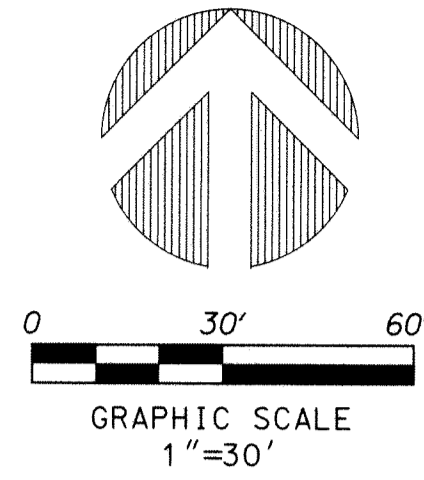


**PERIMETER**  
**SURVEYING & MAPPING**  
 Certificate of Authorization No. LB7264  
 Prepared by Jeff S. Hodapp, P.S.M.  
 947 Clint Moore Road  
 Boca Raton, Florida 33487  
 Tel: (561) 241-9988  
 Fax: (561) 241-5182



# AURA DELRAY BEACH

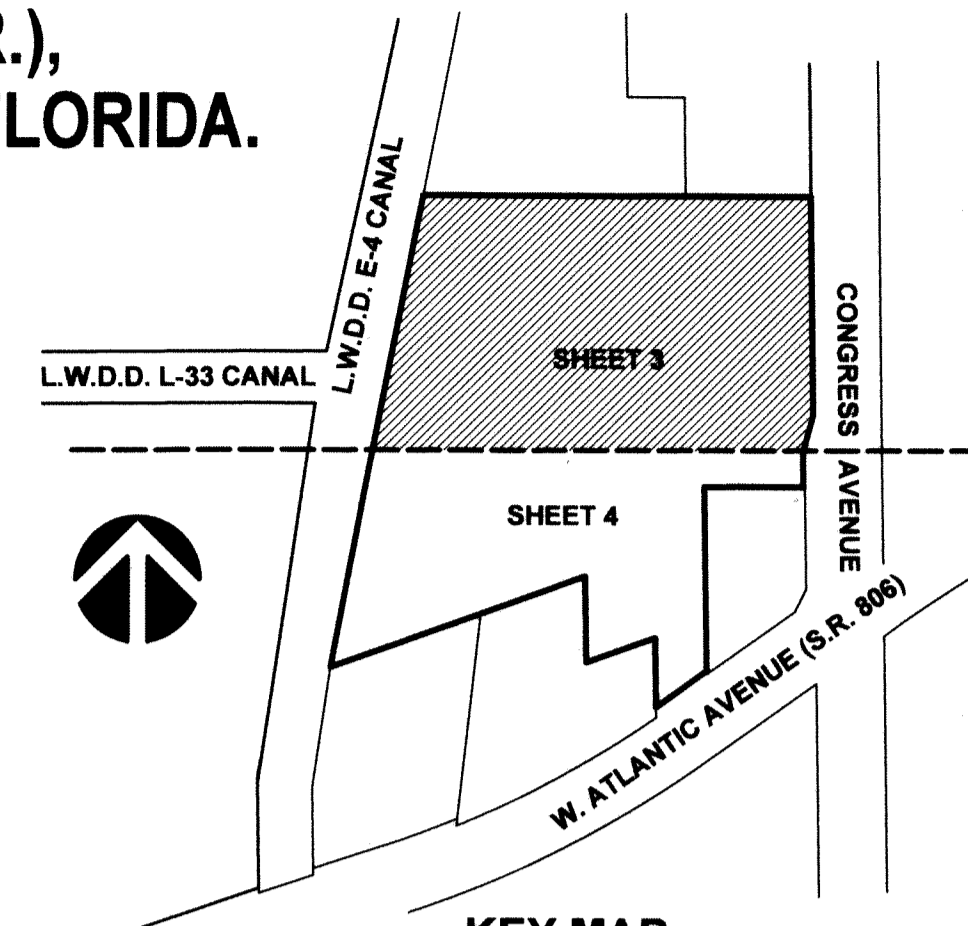
A REPLAT OF A PORTION OF TRACTS 27, 38 AND 39, "MODEL LAND COMPANY'S SUBDIVISION OF THE NORTH HALF AND PART OF THE SOUTH HALF OF SECTION 18-46-43", (P.B 6, PG. 51, P.B.C.R.), IN SECTION 18, TOWNSHIP 46 SOUTH, RANGE 43 EAST, DELRAY BEACH, PALM BEACH COUNTY, FLORIDA.

**LEGEND**

- ⊙ - CENTERLINE
- ⊙ - PRM -SET PERMANENT REFERENCE MONUMENT •LB7264, UNLESS NOTED OTHERWISE
- - SET 1/2" IRON ROD AND CAP •LB7264
- - SET NAIL & DISK •LB7264

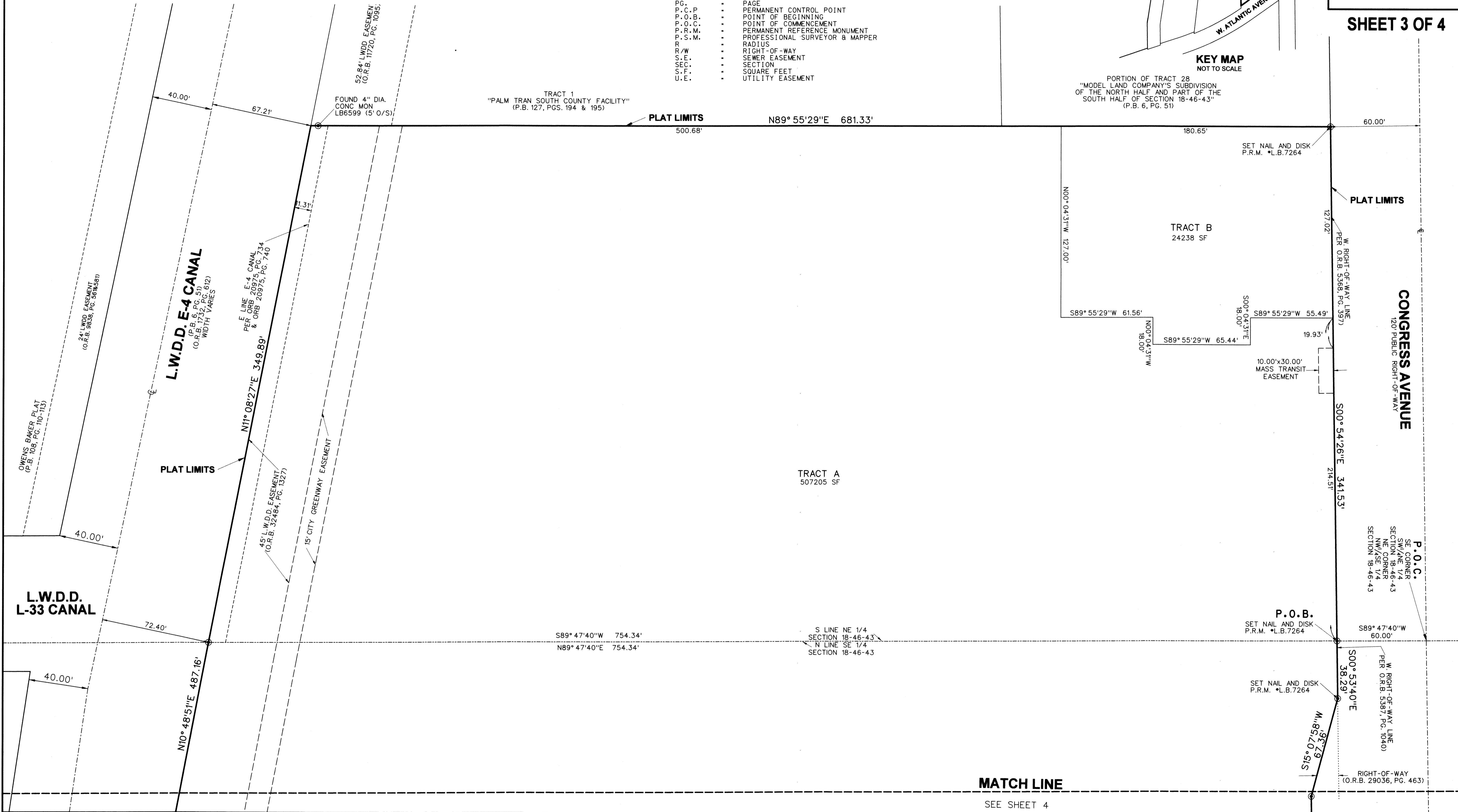
**ABBREVIATIONS:**

- COR. - CORNER
- Δ - DELTA (CENTRAL ANGLE)
- D.E. - DRAINAGE EASEMENT
- DIA. - DIAMETER
- G.U.E. - GENERAL UTILITY EASEMENT
- I.R. - IRON ROD
- IRC - IRON ROD & CAP
- L - ARC LENGTH
- L.B. - LICENSED BUSINESS
- L.S. - LICENSED SURVEYOR
- MON. - MONUMENT
- N.R. - NON-RADIAL
- O.R.B. - OFFICIAL RECORDS BOOK
- P.B.C.R. - PALM BEACH COUNTY RECORDS
- P.B. - PLAT BOOK
- PG. - PAGE
- P.C.P. - PERMANENT CONTROL POINT
- P.O.B. - POINT OF BEGINNING
- P.O.C. - POINT OF COMMENCEMENT
- P.R.M. - PERMANENT REFERENCE MONUMENT
- P.S.M. - PROFESSIONAL SURVEYOR & MAPPER
- R - RADIUS
- R/W - RIGHT-OF-WAY
- S.E. - SEWER EASEMENT
- SEC. - SECTION
- S.F. - SQUARE FEET
- U.E. - UTILITY EASEMENT



180

**SHEET 3 OF 4**



**MATCH LINE**

SEE SHEET 4